

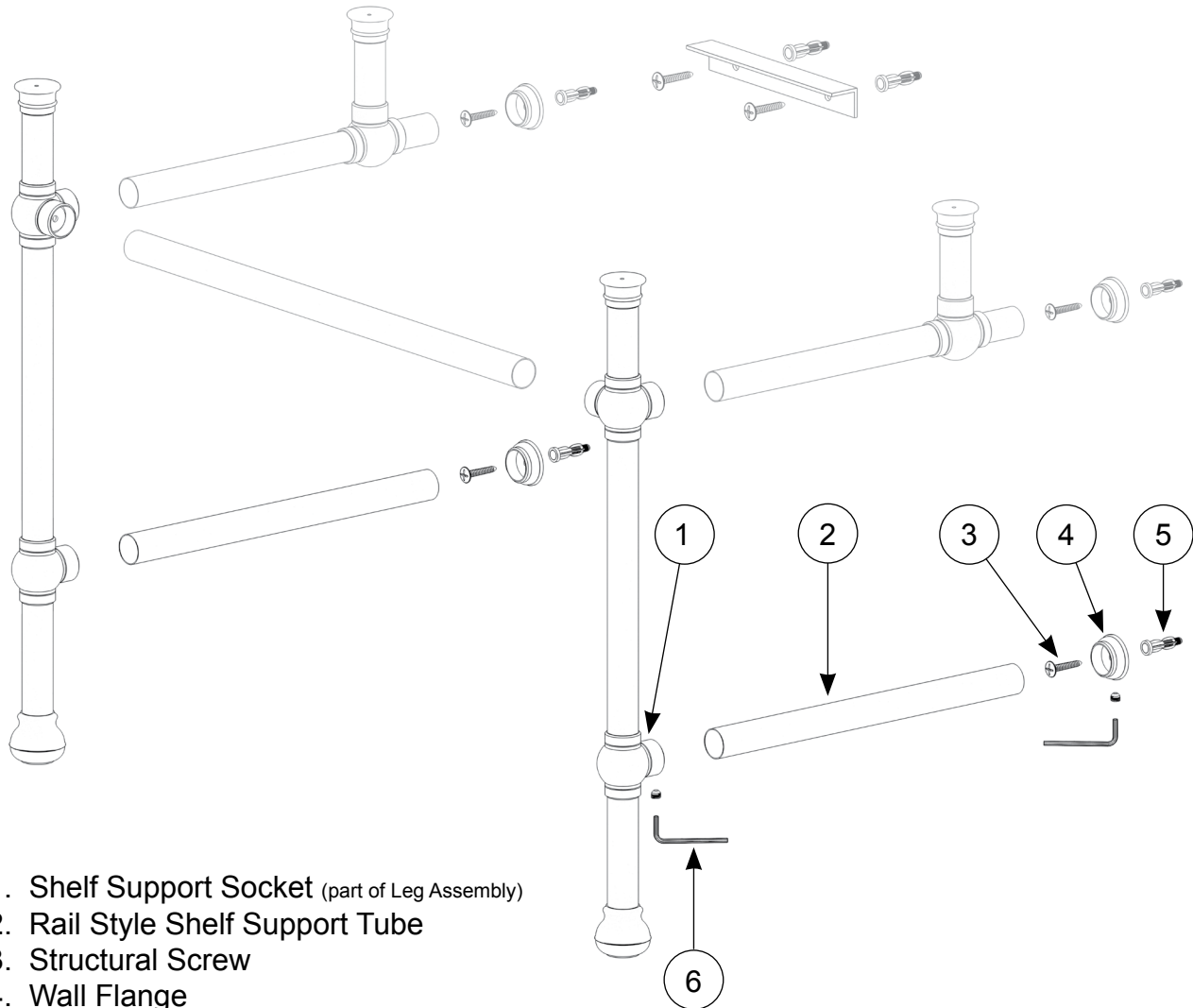
Rail Style  
Shelf Supports

**SS2R\***

&

**SS3R\***

Bun Foot Style shown for reference only



1. Shelf Support Socket (part of Leg Assembly)
2. Rail Style Shelf Support Tube
3. Structural Screw
4. Wall Flange
5. Wall Anchor
6. Hex Wrench & Set Screw

The Rail Style Shelf Support Wall Flanges (#4) **MUST** be positioned so that the Rail Style Shelf Support Tubes (#2) are level, parallel, and are square to the Front Horizontal Crossbar.

\* Note: For Leg System Configurations with rear Legs, the Rail Style Shelf Support Tubes (#2) are connected to the Shelf Support Sockets (#1) on the front and rear legs.