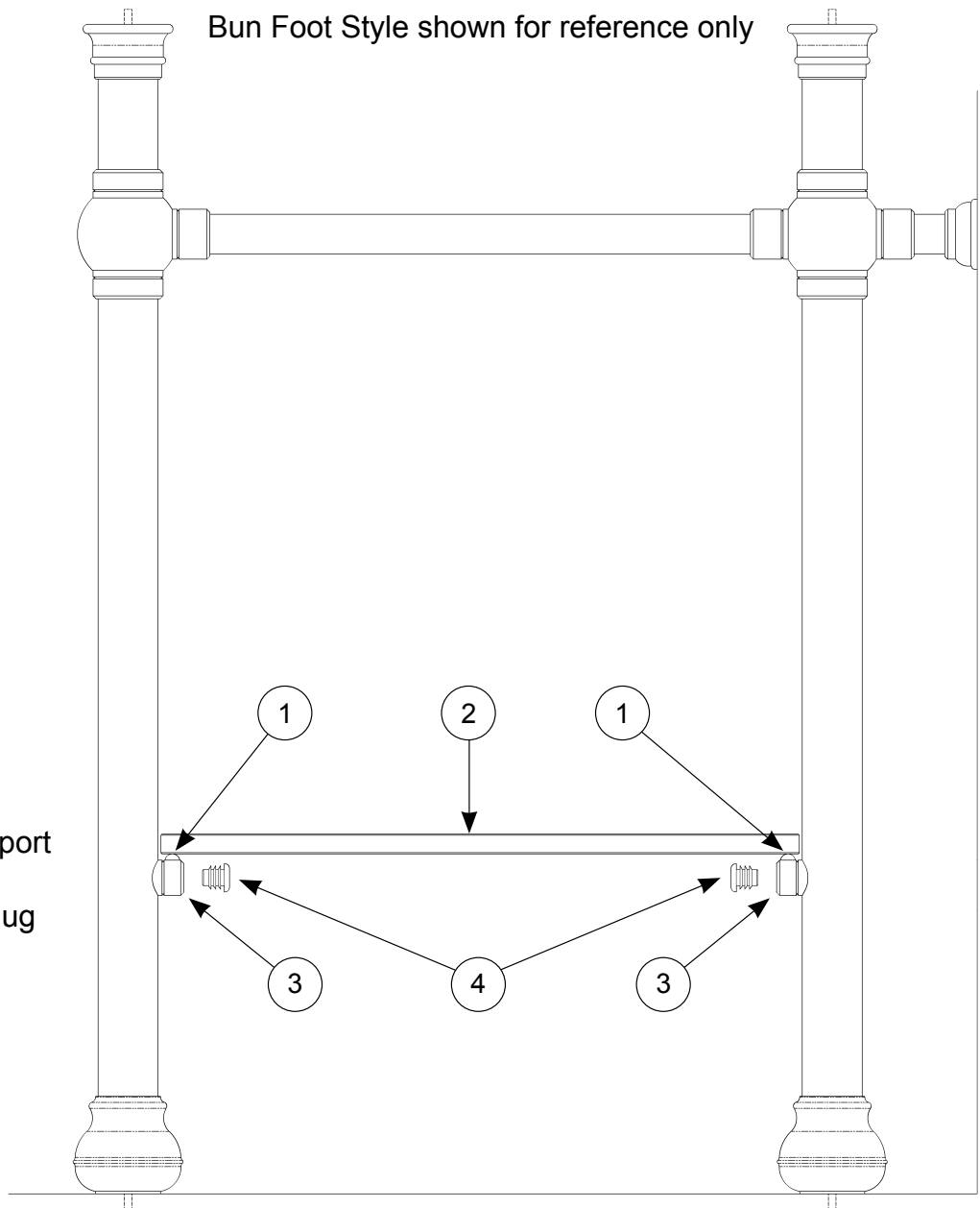


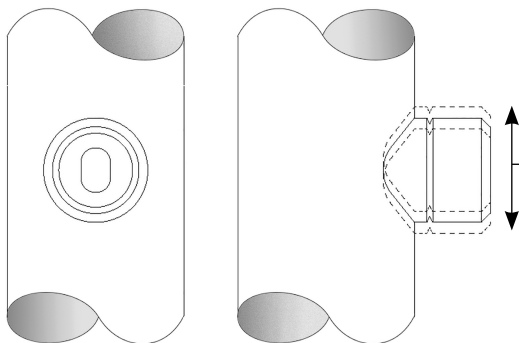
Glass Clip  
Shelf Supports

**SS4GC & SS5GC**

Bun Foot Style shown for reference only



- 1. Rubber Bumpers
- 2. Shelf
- 3. Glass Clip Shelf Support
- 4. Black Plastic Filler Plug



**Glass Clip Shelf Support Adjustment - If Necessary**

- 1. Loosen screw inside Glass Clip Socket (#9) 1/4 turn ONLY !  
CAUTION: over loosening screw will result in loss of nut !
- 2. Vertically adjust Socket as needed for shelf adjustment.
- 3. Re-tighten screw
- 4. Install Black Plastic Filler Plug (#8)

rev: 112318